

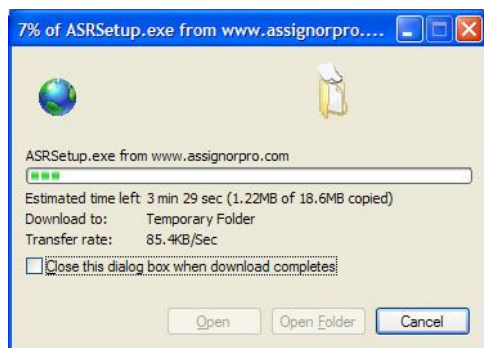
## AssessorPro™ Installation

If the system is being downloaded and installed from the AssessorPro Download page on the Internet website, the following dialogs are displayed.

Click *Run* to install without saving the setup file or click *Save* to save the setup file on your computer. You will be given the option to *Run* the install after the Saved download.



When you click *Run*, the following download dialog is displayed.



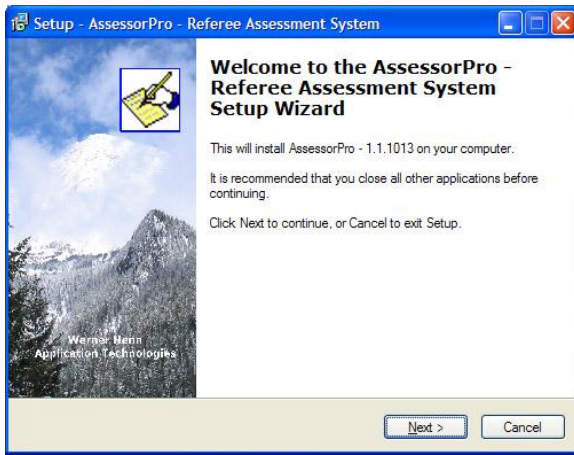
When the Download is complete, the following security dialog is displayed.



Click the *Run* button to start the install process.

There are nine steps to installing the system

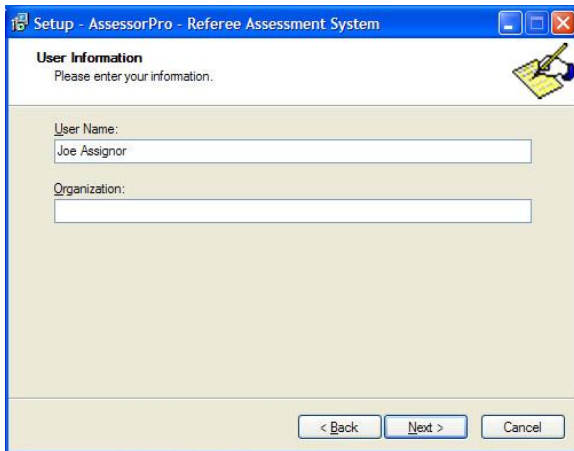
1. 'Welcome ...' dialog is displayed. Click *Next* to continue.



2. The 'License Agreement' dialog is displayed. Click the 'I Accept' option and click *Next* to continue.



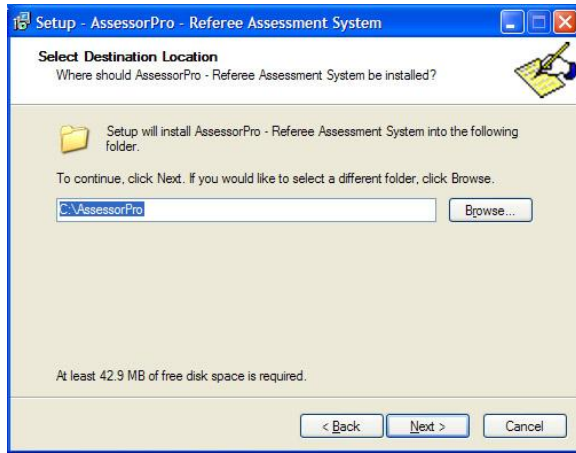
3. The 'User Information' dialog box is displayed next. Correct or add any missing information and click the *Next* to continue.



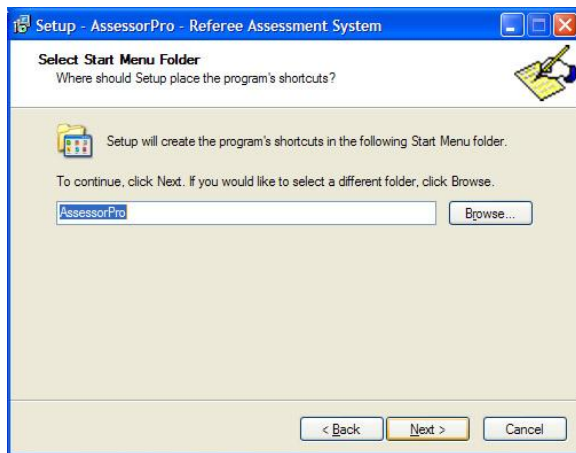
4. The following 'Destination' dialog is displayed with a recommended location to install the system. If this is correct or acceptable, click the Continue button. If you want it in another folder, click the **Browse** button to change the name of the folder and then click the *Next* button.



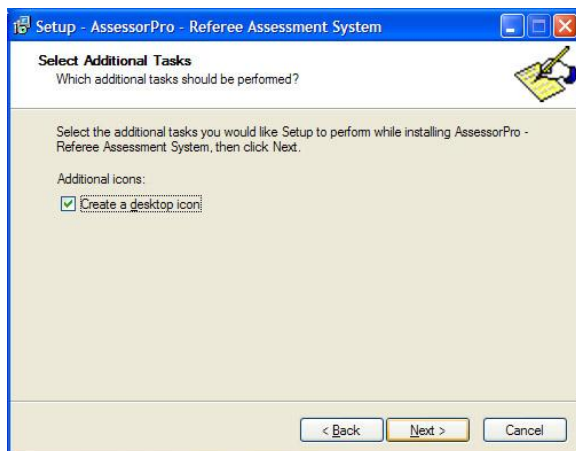
**If the new named folder does not exist, the install process will create the new folder.**



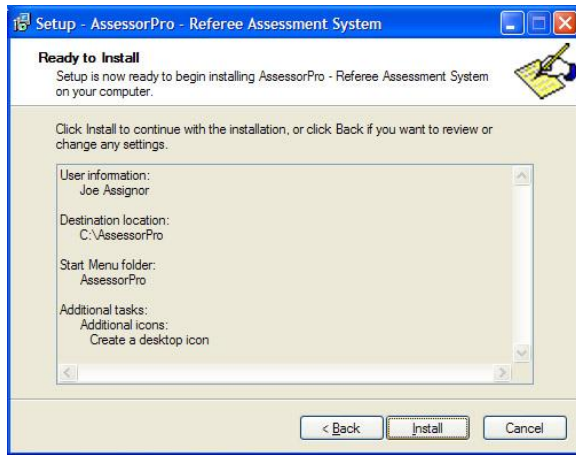
5. The 'Start Menu Folder' dialog is displayed. Click *Next* to continue.



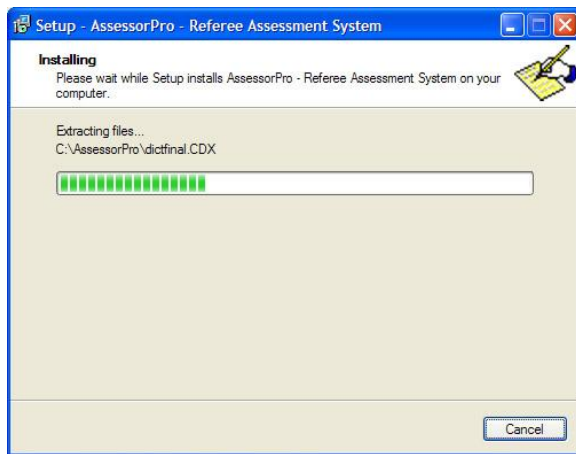
6. The 'Select Additional Tasks' dialog is displayed. To create a desktop icon, leave the checkbox checked. Click *Next* to continue.



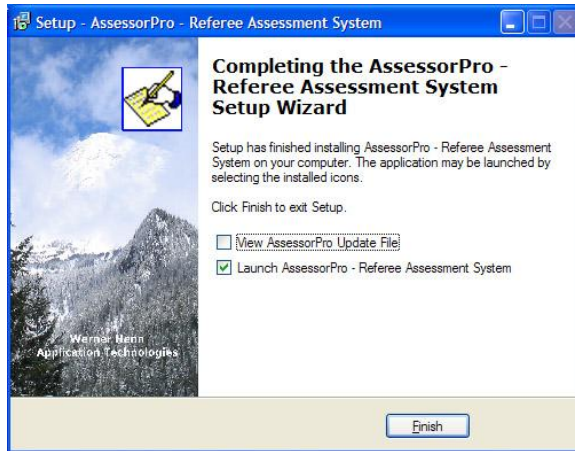
7. The 'Ready to Install' dialog is displayed. If any changes need to be made, click the *Back* button to make those changes. Click *Install* to begin the install of the system.



8. The installation will now begin with a display of the progress of the install.

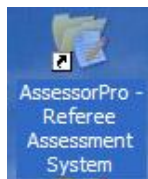


9. When the installation has completed the following completion notice will be displayed.



Click the *Finish* command button. If the checkbox is left checked to launch the AssessorPro, it will be started automatically. To view the Update Readme file, check its checkbox.

A shortcut will be created on the desktop as shown below.



To start *AssessorPro*, double-click the shortcut on your Desktop.